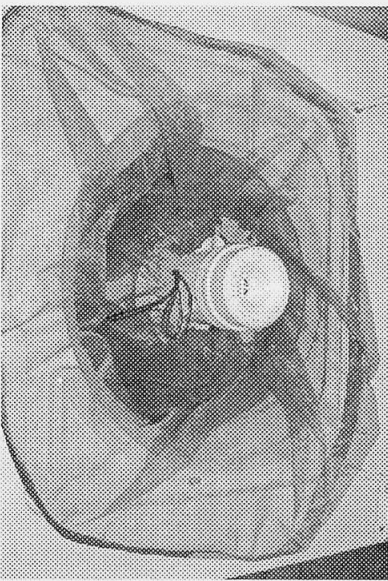


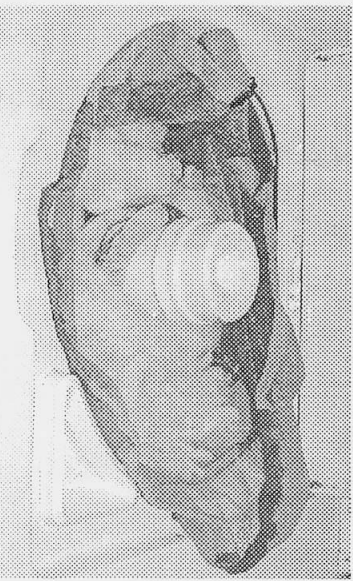
HELP PREVENT CLOGGED WASHING MACHINES AND PIPES BY USING THE UNIQUE FIBER WASHING BAG™.

ONE SIZE - EXTRA LARGE

1. Cinch one cord to fit over the agitator of a top loading washing machine then make an over hand knot. Now place the cinched end over the agitator and tuck the central area into the washing machine. Spread outward the open end as shown.



2. Place the fiber evenly and loosely into the donut shaped pocket. Cinch closed the opening and tie. Remove the bundle from the machine. *Tuck cords inside bag.*



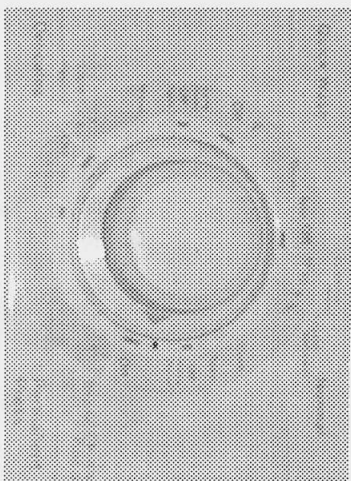
3. Fill machine with hot 140° water and appropriate soap or detergent. **NO WOOLITE®** which is now formulated for use with synthetics.

*****TURN OFF MACHINE SO IT WILL NOT AGITATE!!!**

4. Gently press bag of fiber under until it remains submerged. Do not agitate which causes felting in hot soapy water.

Close lid and **SOAK** 30-45 minutes.

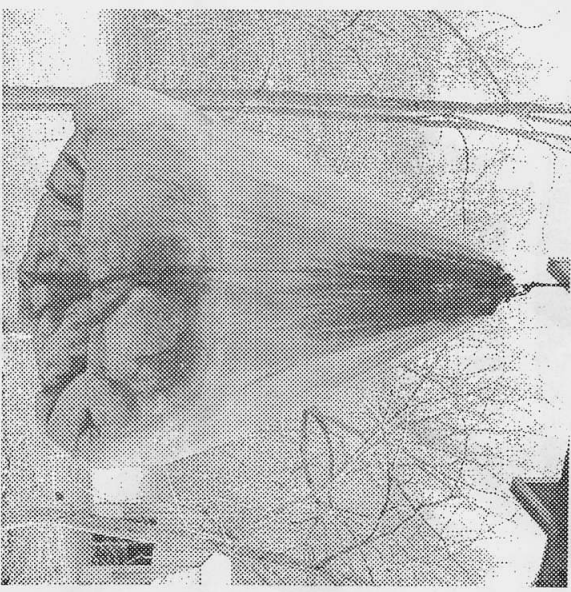
Extract wash water. **BE SURE THIS IS THE PORTION OF A SPIN WITH NO SPRAYING WATER!!!** Mark your dial so you know where!



6. Remove the **FIBER WASHING BAG™** to a basket or container. Cover to keep warm while preparing rinse.

7. To prevent shrinkage, fill with water the same temperature as the extracted water. Add a little vinegar to the first rinse then use clear water for the second rinse. Repeat wash and rinse if needed.

8. Hang the **FIBER WASHING BAG™** to dry.



Or, spread out flat with the fiber, sweater, hats, mittens, etc. held securely inside.

